



PTW ASIA PTE LTD

Semitool Storm 3	
Manufacturer	Semitool
Model	Storm 3
Description	Cassette/Box Washer
Serial Number	H174554
Wafer Size	6 inch
Year of Manufacture	2000
Supply Voltage	200VAC
Phase	3Phase 4 Wire
Full Load Current	75 AMPS
Largest Motor or Load	20 (HTR 30) AMPS
Short Circuit Interrupt	5,000 AMPS
Electrical Diagram Number	16123
Frequency	50/60 Hz


This data sheet is provided to you on a strictly confidential basis and contains commercially sensitive and valuable information. No part of its content may be provided to any person without our prior written consent. This data sheet is not an offer capable of acceptance. The information contained in this data sheet is, to our knowledge and information, accurate, but it may contain typographical errors and we do not warrant the completeness or accuracy of the information contained herein. Any offer by you to purchase of the equipment described in this data sheet shall be subject to our standard terms and conditions of sale. The Equipment being quoted is described as used, and is being sold "AS IS, WHERE IS" with all defects, known or unknown, entirely at Buyer's own risk and reliance solely upon Buyer's own inspection of the goods and without reliance upon any representation or description by Seller or seller's representative concerning the goods.



This data sheet is provided to you on a strictly confidential basis and contains commercially sensitive and valuable information. No part of its content may be provided to any person without our prior written consent. This data sheet is not an offer capable of acceptance. The information contained in this data sheet is, to our knowledge and information, accurate, but it may contain typographical errors and we do not warrant the completeness or accuracy of the information contained herein. Any offer by you to purchase of the equipment described in this data sheet shall be subject to our standard terms and conditions of sale. The Equipment being quoted is described as used, and is being sold "AS IS, WHERE IS" with all defects, known or unknown, entirely at Buyer's own risk and reliance solely upon Buyer's own inspection of the goods and without reliance upon any representation or description by Seller or seller's representative concerning the goods.



This data sheet is provided to you on a strictly confidential basis and contains commercially sensitive and valuable information. No part of its content may be provided to any person without our prior written consent. This data sheet is not an offer capable of acceptance. The information contained in this data sheet is, to our knowledge and information, accurate, but it may contain typographical errors and we do not warrant the completeness or accuracy of the information contained herein. Any offer by you to purchase of the equipment described in this data sheet shall be subject to our standard terms and conditions of sale. The Equipment being quoted is described as used, and is being sold "AS IS, WHERE IS" with all defects, known or unknown, entirely at Buyer's own risk and reliance solely upon Buyer's own inspection of the goods and without reliance upon any representation or description by Seller or seller's representative concerning the goods.

 Highlec Systems

PACKING LIST

Lot No.	Type	Mfr.	Model				
201104-008	Carrier cleaner	SEMITOOL	STORM-3				
Lot No./S/N	Vintage	Wafer Size	S/N				
STORML21	2000		H174554				
Item	Description	Model	Qty	Dim(LWH,cm)	Net Weight	Out	In
1001	Main Frame		1	98 106 200			
1002							
1003							
1004							
1005							
1006							
1007							
1008							
1009							
1010							
1011							
1012							
1013							
1014							
1015							
1016							
1017							
1018							
1019							
1020							
1021							
1022							
1023							
1024							
1025							
1026							
1027							
1028							
1029							
1030							
1031							
1032							
1033							
1034							
1035							
1036							
1037							
1038							
1039							
1040							
1041							
1042							
1043							
1044							
1045							
1046							
1047							
1048							
1049							
1050							
1051							
1052							
1053							
1054							
1055							
1056							
1057							
1058							
1059							
1060							
1061							
1062							
1063							
1064							
1065							
1066							
1067							
1068							
1069							
1070							
1071							
1072							
1073							
1074							
1075							
1076							
1077							
1078							
1079							
1080							
1081							
1082							
1083							
1084							
1085							
1086							
1087							
1088							
1089							
1090							
1091							
1092							
1093							
1094							
1095							
1096							
1097							
1098							
1099							
1100							

Packing Check

Date _____

Deliver's sign _____

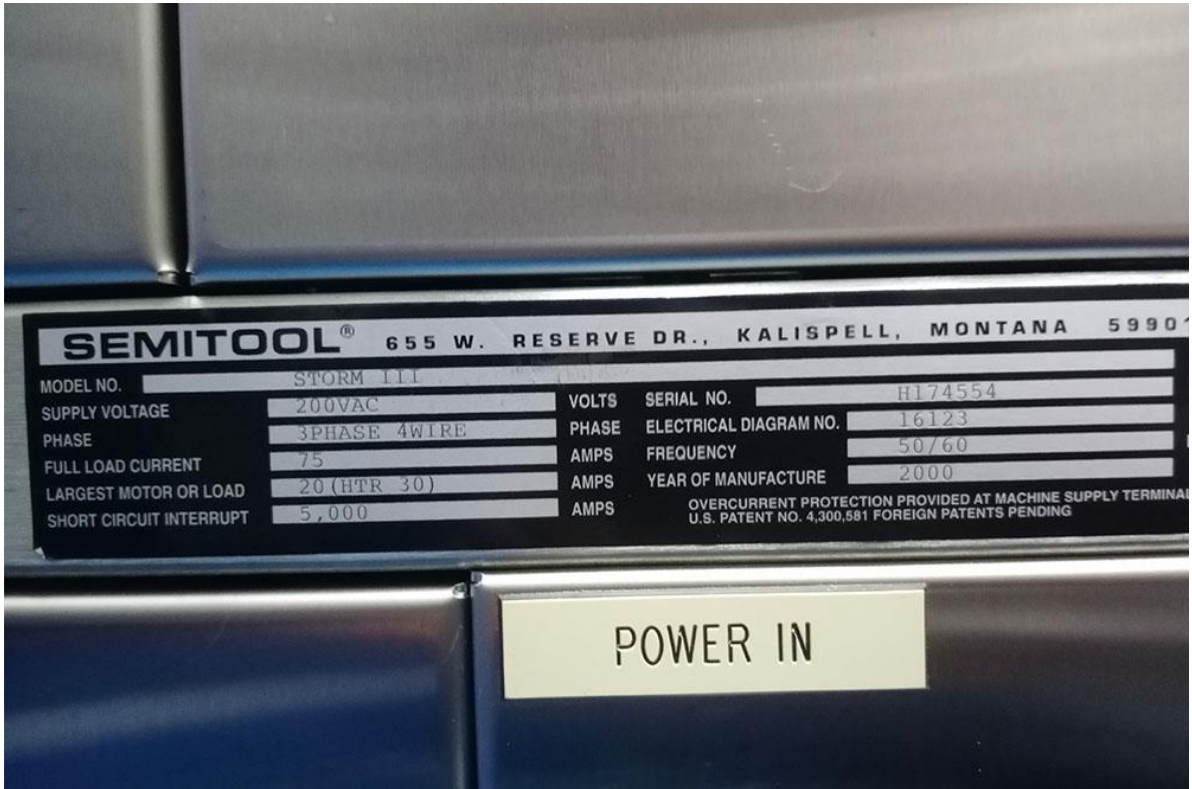
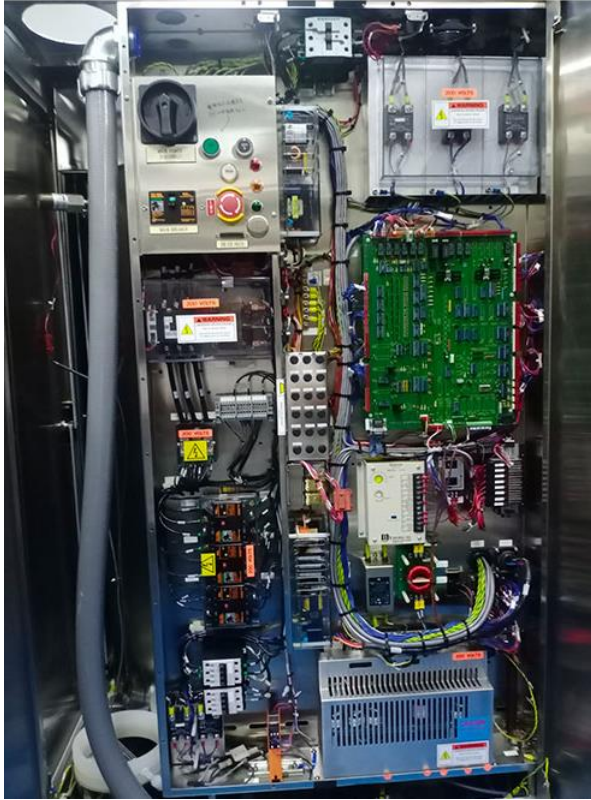
Date _____

Revised's sign _____

Page 1 of 1



This data sheet is provided to you on a strictly confidential basis and contains commercially sensitive and valuable information. No part of its content may be provided to any person without our prior written consent. This data sheet is not an offer capable of acceptance. The information contained in this data sheet is, to our knowledge and information, accurate, but it may contain typographical errors and we do not warrant the completeness or accuracy of the information contained herein. Any offer by you to purchase of the equipment described in this data sheet shall be subject to our standard terms and conditions of sale. The Equipment being quoted is described as used, and is being sold "AS IS, WHERE IS" with all defects, known or unknown, entirely at Buyer's own risk and reliance solely upon Buyer's own inspection of the goods and without reliance upon any representation or description by Seller or seller's representative concerning the goods.



This data sheet is provided to you on a strictly confidential basis and contains commercially sensitive and valuable information. No part of its content may be provided to any person without our prior written consent. This data sheet is not an offer capable of acceptance. The information contained in this data sheet is, to our knowledge and information, accurate, but it may contain typographical errors and we do not warrant the completeness or accuracy of the information contained herein. Any offer by you to purchase of the equipment described in this data sheet shall be subject to our standard terms and conditions of sale. The Equipment being quoted is described as used, and is being sold "AS IS, WHERE IS" with all defects, known or unknown, entirely at Buyer's own risk and reliance solely upon Buyer's own inspection of the goods and without reliance upon any representation or description by Seller or seller's representative concerning the goods.

PTW ASIA PTE LTD



All Equipment is offered subject to prior sale. This item will be quoted based upon specific terms and configuration required. Interested parties may contact PTW Asia Pte Ltd at:

ask@ptwsingapore.com

Visit our web site at www.ptwsingapore.com © 2019 PTW ASIA PTE LTD.

This data sheet is provided to you on a strictly confidential basis and contains commercially sensitive and valuable information. No part of its content may be provided to any person without our prior written consent. This data sheet is not an offer capable of acceptance. The information contained in this data sheet is, to our knowledge and information, accurate, but it may contain typographical errors and we do not warrant the completeness or accuracy of the information contained herein. Any offer by you to purchase of the equipment described in this data sheet shall be subject to our standard terms and conditions of sale. The Equipment being quoted is described as used, and is being sold "AS IS, WHERE IS" with all defects, known or unknown, entirely at Buyer's own risk and reliance solely upon Buyer's own inspection of the goods and without reliance upon any representation or description by Seller or seller's representative concerning the goods.